

# ESG Sustainability

2025 Indicators

GRUPO  
SUPERVIELLE



# Table of Contents

Sustainability Strategy

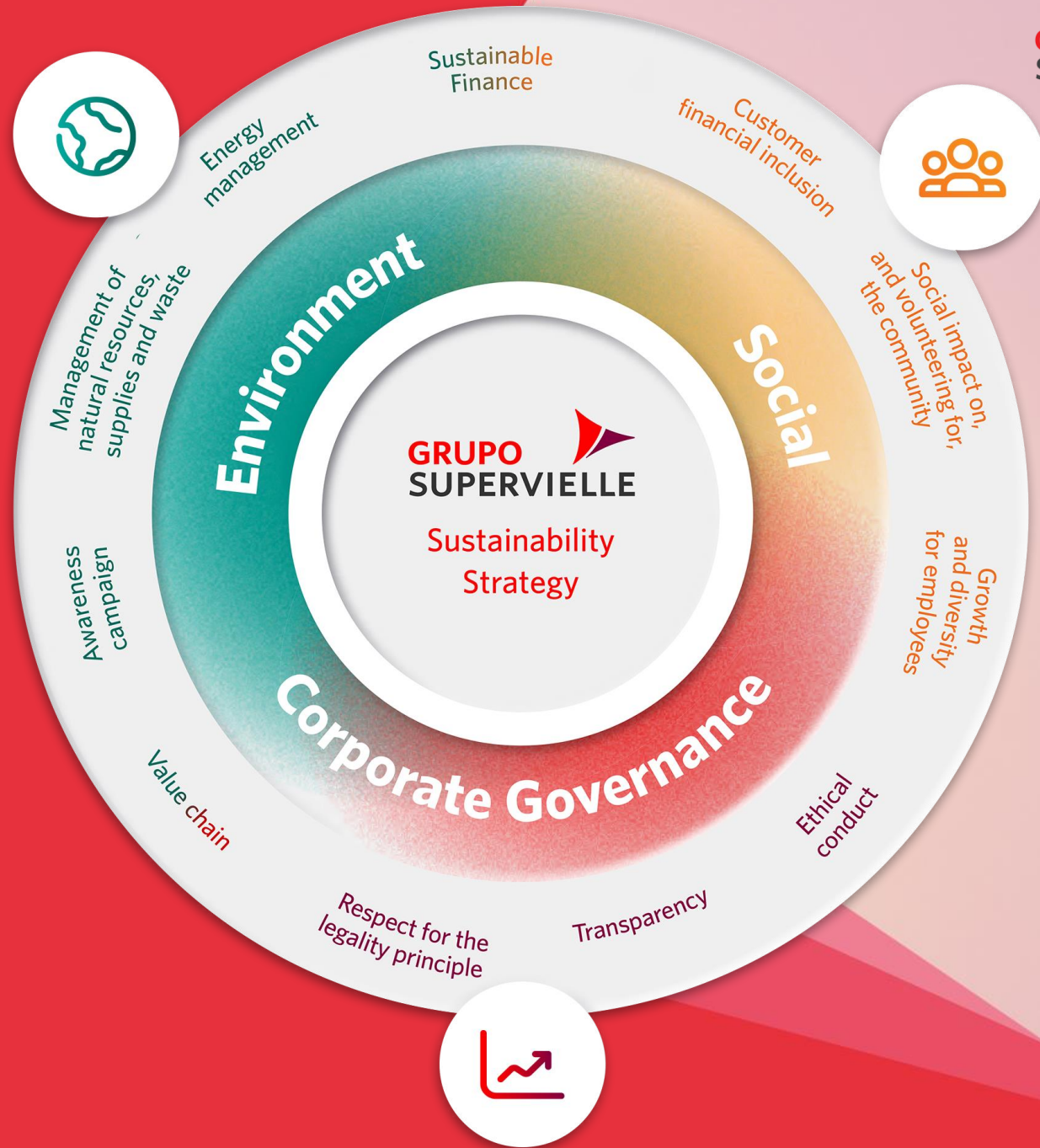
Environment

Social

Corporate Governance

Sustainable Finance

# Sustainability Strategy



# environment

Energy Management, Environmental Impact, Waste



## Energy management



**27.8 %**

of our matrix is powered by energy from renewable sources



**42%**

of our branch network is supplied with energy from renewable sources



**27**

buildings with self-generation of electrical energy



**4%**

reduction in total electricity consumption

## Environmental impact

**-9.4%**

Vs. 2024

Scope 1 and Scope 2  
**Carbon Footprint**  
(Location-based)

**-35%**

Vs. 2021 (base year)

**100%**

Carbon footprint offset



**18,028**

Trees donated for the reforestation of Parque Nacional Lanín by the "Hacemos Bosque" (We Make Forest) project of Asociación Amigos de la Patagonia

## Natural Resources



**73%**

of branches have automatic shut-off faucets



**60%**

of branches are equipped with dual-flush toilets

## Waste



**29%**

of waste recovered



**-5%**

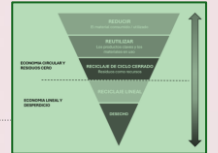
paper consumption (printing)

**161**

employees trained with ECOHOUSE

**Waste Management training course**

## Waste Management Policy



**Environmental awareness campaigns**

In partnership with



Second life for disused ATMs and totems



Discarded credit and debit cards transformed into 142 Eco-sleepers (638 kilos of plastic and 85 kilos of cellophane)

In partnership with



322 recovered and donated **computers and notebooks**



32 **schools**, social organizations and municipalities reached



6,757 **beneficiaries**

Other donations to third parties:



**Donation of furniture and office supplies:**

179 **furniture** recovered from branches donated to social organizations



8 **beneficiary institutions** (schools, social organizations, public entities)



## UN Global Compact

Banco Supervielle was recognized in the **Positive Social and Environmental Impact** category



# social

Customers, Community, Employees



# Community and Financial Education

# 20,362

People trained in financial education during 2025

## Partnerships



DGe



# \$47.7M

Investment in financial education



# 14,877

Young people and teachers reached

Financial education for young people in partnership with IOL Academy, Junior Achievement, and Conciencia



# 5,485

Customers and community

Training on Fraud Prevention Channel Usage Investments

## BLOG

We generate financial education content for our clients and communities through YouTube tutorials and Blog articles.

# +83,809

Cumulative views



**145.879**

People trained in financial  
education in the **last 10**  
**years**

# Community & education

# 112



School completion scholarships, trade scholarships, and university scholarships



70 School completion scholarships

68 Cumulative Graduated Students



22 University scholarship recipients



5 Students have completed their university degrees



20 Principals per year

9th Cohort of the Educational Leadership Program

180 Principals and supervisors — 67% out of 268 total



70% From Mendoza's primary schools

263 students

21 schools

Career Exploration Activities (CEA)

# Community



Senior citizens:  
Ashoka Multipliers  
Program + Fraud  
Prevention Workshops

+186

People reached through support and well-being initiatives



Childhood



895,635

Meals donated to the Food Banks of Buenos Aires, Córdoba, and Mendoza in 2024



3,711,528

Total meals donated

556

Children reached through comprehensive support initiatives

# Community



Institutional strengthening



RIL Supervielle Award for Efficient Cities

Local Innovation Network (RIL):

**20** Participating cities



Participation in a voter awareness campaign promoting civic engagement and democratic strengthening

**112,785** Views



Participation in a consortium supporting a pension reform initiative **CIPPEC**



Transparency and Access to Public Information **Fundación Poder Ciudadano**



**Aportes Award**  
20 Years of Management and Impact Management Contributions



Promoting tax education and awareness within the community

**Lógica Asociación Civil**

## Employees



3,348

Employees



562

Employees dedicated 6,408 hours to social and environmental volunteering actions

16.7%

of the total workforce



40,734

Total training hours

11hs

Total training hours

## DEI

51%

Women in the workforce

22%

Women in senior executive positions



Mentoring Program (Cumulative Results)

33 → 66% → 33%

Participants

Salary Increase

Role change

# corporate governance





## Corporate governance

Integrated Annual Report



**16** years reporting

Value chain



**68%**

of strategic suppliers trained on  
ESG topics

# sustainable finance





## Sustainable finance

ESG mutual fund



**+\$881.2M**

managed assets

SME Financing Line with BID Invest



**U\$S260M**

Social and Environmental Risk Management

**49%**

of companies  
assessed

**5%**

total high-risk  
portfolio

Thank you!